

Washing Machine

HITACHI
Inspire the Next

AUTHENTICALLY
Japan Made



The Hitachi Story



The Hitachi Story

True to its hallmark history and philosophy of innovation, Hitachi's Washing Machines are big in both capacity and ability. From its powerful wash cycle that results in thorough washing and drying, to its Wind Iron for minimum-crease clothing and its heat-recycling technology, each is a clean breakthrough, quite unrivalled. Indeed, Hitachi's perpetual cycle of innovation ensures you are always equipped with Japan's finest product technology.

2006

Big Drum

Large capacity for washing high volume of clothes. Removes dirt completely through powerful beat washing and swirling to enable even and thorough, minimum-crease drying.



2008

Steam Iron

Blow dry clothes hung out to dry or kept away. High-speed wind smoothens creases, removes odours at the press of a button.



2007

Wind Iron

Big drum enables wide spread of clothes. Blow dry at wind speed of 360km per hour smoothens creases, so clothes can be worn without ironing.



2011

Slim Type

Slim-type big drum can be conveniently placed within limited spaces.



2008

Heat Recycle Drying

A new energy-saving technology recycles and reuses heat energy generated during operation in innovative ways.



2013

Ultra Stream Wash

Large volume, circulation shower thoroughly washes with the power of water.



2011

Auto Self Clean

99% of germs removed and mould growth prevented with every wash.



2016

Allergy Care Program

Washes away common dust mite allergens for improved hygiene.



2015

Ultra Stream Rinse

Dual shower, strong centrifugal force rinse out dirt and detergent thoroughly.



2015

Hot Mist

High-Speed hot air mist heats up and activates enzyme elements to remove yellowing due to oxidation of grease.



Highly Innovative, Immensely Effective



BD-NX110AHJ



BD-SG100AJ



BW-DV105AJ

Front Load with Slim Depth



BD-NX110AHJ

- **Wind Iron**
Smoothens out wrinkles after washing and spin-drying
- **Ultra-Stream Wash**
Circulates highly concentrated detergent for an outstanding wash
- **Ultra-Stream Rinse**
Thoroughly rinses out dirt and detergent
- **Auto Self Clean**
Automatically cleans itself

Wind Iron

Straightens Out Creases with High-Speed Winds

Hitachi's original Wind Iron technology smoothens out wrinkles after washing and spin-drying, so that you can wear clothes directly out of the drum and save time on ironing. The big drum allows clothes to move freely when drying to prevent wrinkling, while the high-speed airflow of about 300km/h¹ generated by the Jet Fan Motor stretches out the remaining wrinkles.

Furthermore, a light and gentle finishing is provided to the clothes, preventing change in form or shrinkage from heat, through Humidity Control and Low Heat Drying with temperature of clothes at about 60°C and below.²



Humidity Control
Controls humidity inside the drum. Heats the clothes with steam and cleans up even the sleeves.*

*For loads under 4kg volume.



Low Heat Drying
Prevents shrinkage and shape changes from the heat, and enables gentle dry up.

1. Calculated from area of air outlet and wind volume.
2. Tested by Hitachi. Based on a Wash-dry / Cotton program with 4kg load. Measured on test fabrics set by The Japan Electrical Manufacturers' Association. * Depending on laundry item materials, temperatures reached when drying may differ. Laundry item temperatures may be higher than that of the cotton program depending on course selected.

Crease removal from dried items

For those busy mornings / Before going out

Steam Iron Function

High inner drum temperatures and high speed winds blow over items smoothing out creases, even removing odours.

2 Shirts, as little as 15mins
(4 Shirts: 30mins)

Also works on clothes that have been stored folded!



Before Steam Iron

After Steam Iron

*For loads under 1kg.

Dress shirts
(crease resistant)
65% Polyester 35% Cotton

Dress shirts
(non-crease resistant)
100% Cotton

Jersey fabric clothing
(non-crease resistant)

Pants
75% Cotton 25% Polyester

Handkerchieves
100% Cotton

1kg High speed winds + Humidity Control
Neat right down to the sleeves! Ready to wear without ironing



4 kg High speed winds + Humidity Control
2-3 family-size one day load, this good without ironing



6 kg High speed winds
Few creases even in heavy loads

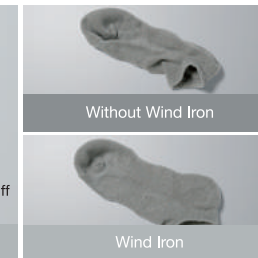


*Tested by Hitachi. Based on a Wash-dry / Cotton program

Prevents Shrinkage and Shape Changes with Low Heat Drying



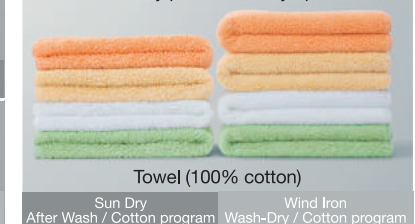
Hoody top 92% Cotton 8% Polyester.



Socks 39% Cotton 39% Acrylic 15% Nylon 4% Polyester 4% Polyurethane.

Difference in fluffies

Fluffy pile all the way up



*Tested with 4kg load.

*Tested by Hitachi with 4kg load. Wind Iron model (BD-NX120A) is equivalent to BD-NX110AHJ and non-Wind Iron model (BD-V1400) is equivalent to BD-W1500. Final result may differ depending on the volume, materials and combination of laundry being dried.

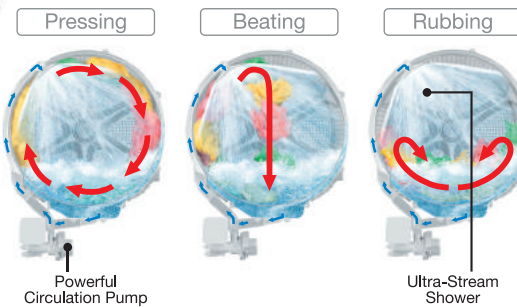
Ultra-Stream Wash



Image for illustration purposes only.

Ultra-Stream Wash

Using a powerful circulation pump, highly concentrated detergent penetrates deep into fabrics. The Ultra-Stream Wash washes by 'Pressing', 'Beating' and 'Rubbing' laundry, all the while conserving water and giving an outstanding white finish.



Removes Even Stubborn Muddy Dirt



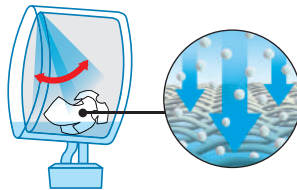
*Tested by Hitachi. Based on the Cotton program with 3.5 kg load, model BD-NX120A, equivalent to the BD-NX110AHJ. Results will differ depending on type of laundry, dirt, detergent and course.

Fluffy, White Finish

Reducing the time for 'Beating' stops fabric from stiffening and with the help of the high volume of water, keeps laundry from going dull.

Swing Shower

New forward/backward movements added to the shower. Highly concentrated liquid detergent is quickly dispersed over wide area and permeates deep into fabrics.



Variable Temperature Control

With the built-in heater, washing with four different temperature settings are available depending on type of fabric and degree of dirt on your clothes. The sterilising effect is also effective for above 40°C settings.

30°C	40°C*1	50°C*1	60°C*2
For delicate clothes.	99.9% Anti-bacterial. For regular washing.	99.9% Anti-bacterial. For stubborn dirt.	99.99% Anti-bacterial. Ideal for cotton.

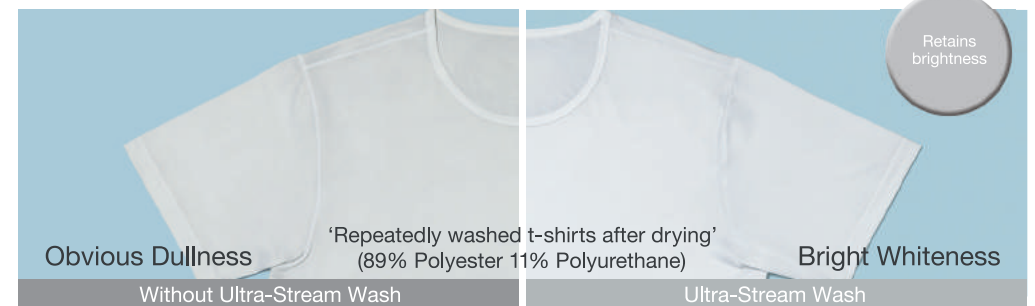
Tested by Kitasato Research Center for Environmental Science,

*1 For loads under 8kg

*2 For loads under 2kg

• Document Number: 2017_0298, 2017_0246

• Test methods: Measurement of the rate of decrease of bacteria attached to the test cloth when using Anti-bacterial program.



*Tested by Hitachi. Based on Wash / Cotton program with 3.5kg load. The results of Ultra-Stream Wash are of the model BD-NX120A, equivalent to BD-NX110AHJ and without Ultra-Stream Wash are of the model BD-V9500, equivalent to BD-W1500.

Hot Mist



Hot Mist

High speed hot air mist heats up and activates the enzyme elements in highly concentrated liquid detergent. The sprayed mist is circulated and quickly warms up laundry to around 40-50°C helping to remove the yellowing that results from the oxidation of grease.



Hot mist warms up clothes to 40-50°C

Hot Mist Pump

Image for illustration purposes only.

Removes Yellow Stains

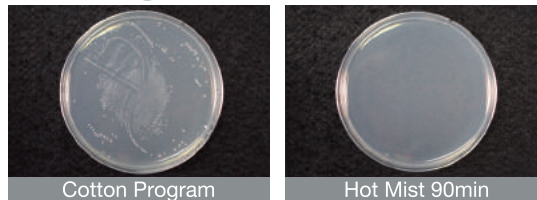


Even removes yellowing!
(90 mins Hot Mist wash)

Hot Mist 90 min

The 'Hot Mist 90 min' program will help to remove the yellowing that results from the oxidation of grease.

Washes Away Odour-causing Bacteria too!



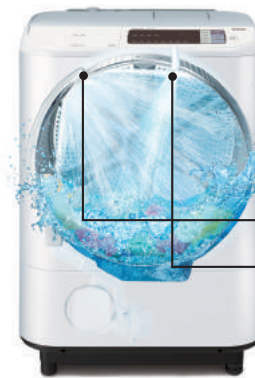
- Tested by Kitasato Research Center for Environmental Science
- Document Number: 2016_0286
- Test methods: Measurement of the rate of decrease of bacteria smeared on test clothes when using the Hot Mist 90 min Program.
- Test Results: Bacteria Reduction Rate 99%
- *Right after washing cycle ends. The result may change over time.

Hot Mist 30 min

The 'Hot Mist 30 min' program will help to remove sebum and prevent yellow staining. Recommended for seasonal change of clothes and when you want an extra strong wash.

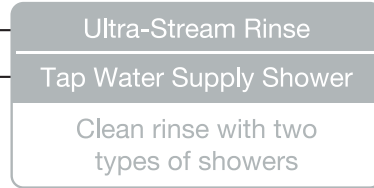
* The Hot Mist 90 min program uses twice the usual amount of synthetic detergent powder. Tested by Hitachi on the Hot Mist 90 min program with 2 kg load, model BD-NX120A, equivalent to the BD-NX110AHJ. Results will differ depending on type of laundry, dirt, detergent and course.

Ultra-Stream Rinse



Ultra-Stream Rinse

Rinsing through dirt and detergent hidden in fibres by circulating plenty of water, Ultra-Stream Rinse with high speed rotation produces strong centrifugal forces.



Ultra-Stream Rinse

Tap Water Supply Shower

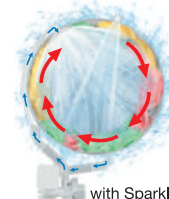
Clean rinse with two types of showers

Dirt and Leftover Detergent Thoroughly Rinsed Out

Water passes through laundry circulated by both 'Ultra-Stream Shower' and the clean 'Tap Water Supply Shower'. The two showers, and strong centrifugal force-producing high speed rotation technology ensure that dirt and leftover detergent are thoroughly rinsed out of the laundry.

Ultra-Stream Shower

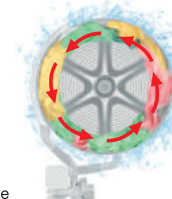
Tap Water Supply Shower



with Sparkling Rinse



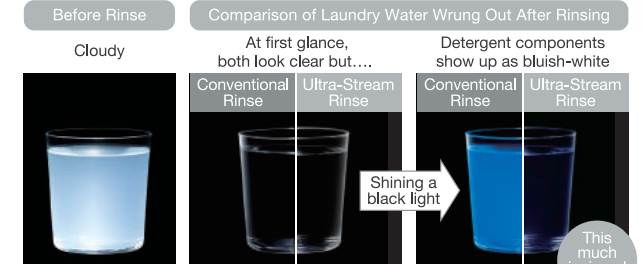
with Normal Rinse



High-speed of approx. 1000rpm provides strong centrifugal force to thoroughly rinse out leftover detergent.

Comparison of Water Wrung Out of the Clothes Using Black Light

Water from both rinse methods looks clear at first glance but using black light clearly shows the difference. Detergent is thoroughly rinsed out with no hidden residue left by the Ultra-Stream Rinse.



Before Rinse

Cloudy

Comparison of Laundry Water Wrung Out After Rinsing

At first glance, both look clear but....

Detergent components show up as bluish-white

Conventional Rinse

Ultra-Stream Rinse

Conventional Rinse

Ultra-Stream Rinse

Shining a black light

This much is rinsed out

*Tested by Hitachi. Rated load wash, using powdered synthetic detergent. Under black light, detergent particles show up bluish-white. Ultra-Stream Rinse model (BD-NX120A) equivalent to BD-NX110AHJ and conventional rinse model (BD-V9700) equivalent to BD-W1500. Results may differ depending on type of laundry, detergent, water and room temperature etc.

Various Programs

Allergy UK-Approved Programs



Allergy Care (Wash/3kg)

After using hot air to heat up fabrics where dust mites lurk, rinsing washes away common dust mite allergens (droppings and dead bodies). Recommended for when you want to give items like blankets that extra sanitary clean. *For loads under 3 kg



Tested by FCG Research Institute, Inc.
 1 Test methods: Measurement (Hitachi standards) of dead dust mites stuck to blankets when using the Allergy Care Program.
 Test Results: Dust mites reduction rate over 99%.
 2 Test methods: Measurement (Hitachi standards) of amount of dust mite allergens (droppings/bodies) when using the Allergy Care Program.
 Test Results: Dust mites allergens reduction rate over 90%.

Hygiene (Dry/1kg)

Removes cigarette smells from clothing. As bacteria removal is done by hot air, clothes come out clean without needing the use of chemicals. Since no drum rotation occurs, this course is recommended for items prone to mis-shaping.

- Tested by Kitasato Research Center for Environmental Science
- Document Number : 2016_0149
- Test methods: Measurement of the rate of decrease of bacteria smeared on laundry items when using the Hot Air Drying Method (approx. 50mins).
- Test Results: Bacteria Reduction Rate 99%



For items like suits not washed frequently but manually



For uniforms worn daily

*Not suitable for items made of leather or containing sponge
 *Not all odours can be removed.

Anti-Bacterial (Wash-Dry/7kg)

Washes and dries 7kg loads at around 70°C. Recommended for items like towels and undergarments where creasing is less of a concern.

- Tested by Kitasato Research Center for Environmental Science
- Document Number : 2016_0189
- Test methods: Measurement of the rate of decrease of bacteria smeared on laundry items when using the Hot Air Drying Method.
- Test Results: Bacteria Reduction Rate 99%

For Your Favourite Clothes



Delicate (Wash/3kg)

A wash that gently rubs out stubborn creases while preventing damage to items.

*Please use liquid neutral detergent, liquid synthetic detergents (some detergents may not be suitable). For items under 3 kg.

Dryclean (Wash/1.5kg)

By circulating plenty of water, clothes are gently washed with hardly any drum rotation.

*Please use liquid neutral detergent. *For items under 1.5 kg.

Other Convenient Programs

Pollen (Dry/2kg)

Removes pollen attached to items that have been left outdoors by washing it away, along with the drainage water from inside the machine.

*For loads of less than 2 kg.

Speedy (Wash/6kg)

Recommended for lightly-soiled items where creasing is less of a concern.



Hygienic Tub Clean Programs

11-hour wash

Tub Clean

Keeps costs down and cleans carefully.

*Maintenance course using tub cleaner. Recommended once every 1-2months if Auto Self Clean is not used, or once every 3-4 months along with Auto Self Clean.

NEW 2 Hour Wash

Hot Tub Clean

Tub cleaner heated up to 35°C for a quick wash.

Auto Self Clean

Auto Self Clean - The Tub Stain Fighter

Every time you do the laundry, the washing machine cleans itself so that you can be sure that you are washing in a clean tub.

Allergy UK Approved 99% Mould and Bacteria Reduction



• Tested by Kitasato Research Center for Environmental Science
 • Document Number : 2016_0150 / 2016_1150
 • Test methods: Measurement of the rate of decrease of bacteria on plates attached to the outer tub and the stainless steel tub when using the Auto Self Clean function.
 • Measurement of the rate of decrease of mold spores on culture plates attached to the outer tub and the stainless steel tub when using the Auto Self Clean Function.

When doing the laundry, switch the Auto Self Clean setting “ON” and it automatically washes away dirt with clean tap water from the outside of the stainless steel tub as well as the inside of the outer tub.



Dirt easily gets trapped in these areas



Back of the front cover of the outer tub

Front part of the stainless steel tub

Inside of the outer tub

Tub will accumulate black mould over time, if not cleaned

During washing, dirt gradually accumulates in the tub. After washing, dirt becomes attached to the tub, becoming harder to remove.

Continuous use of Auto Self Clean reduces need for ‘Tub Clean’ cycle.

	Tub Clean cycle frequency
Without Auto Self Clean	Once every 1-2 months
With Auto Self Clean	Once every 3-4 months

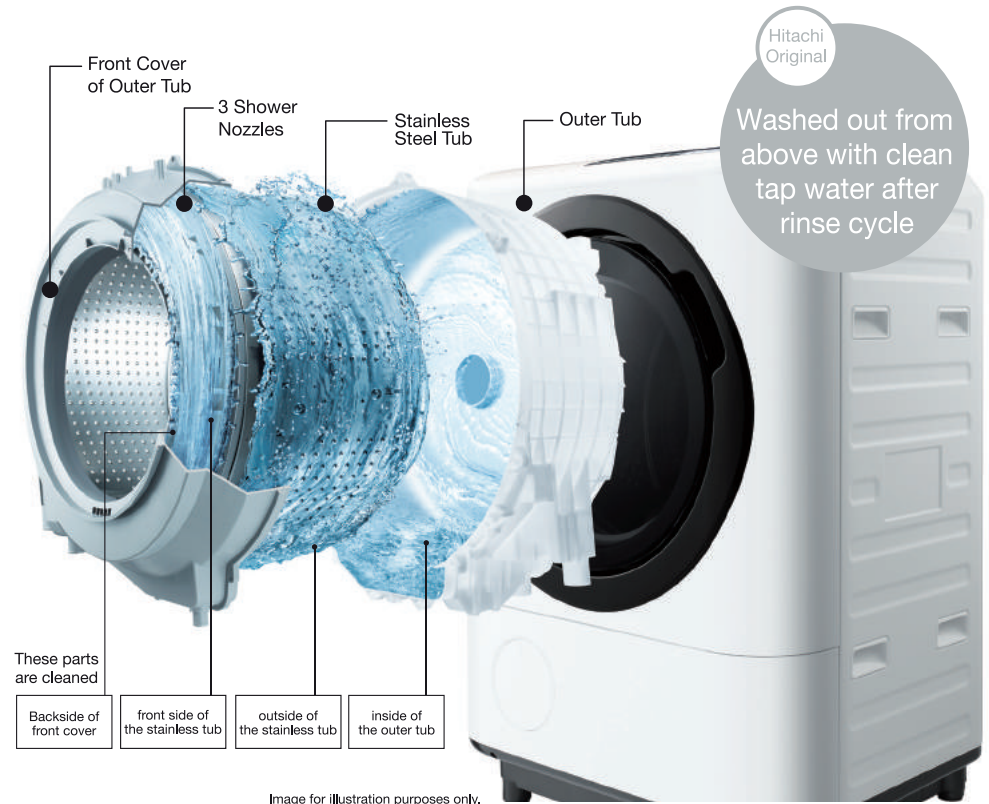


Image for illustration purposes only.

Hitachi Focus-Cleans even the hard-to-see inner parts!

Drain Hose

Flat Inner Structure
Unlike a conventional ribbed style, the flat inner walls help water drain out and make it harder for dirt to build up.

Water Passageway

Drained with High-Speed Air
High-speed air flow drains out the water left inside and keeps it dry.

Washed with Clean Tap Water
Even the invisible water passage is washed with clean, tap water.

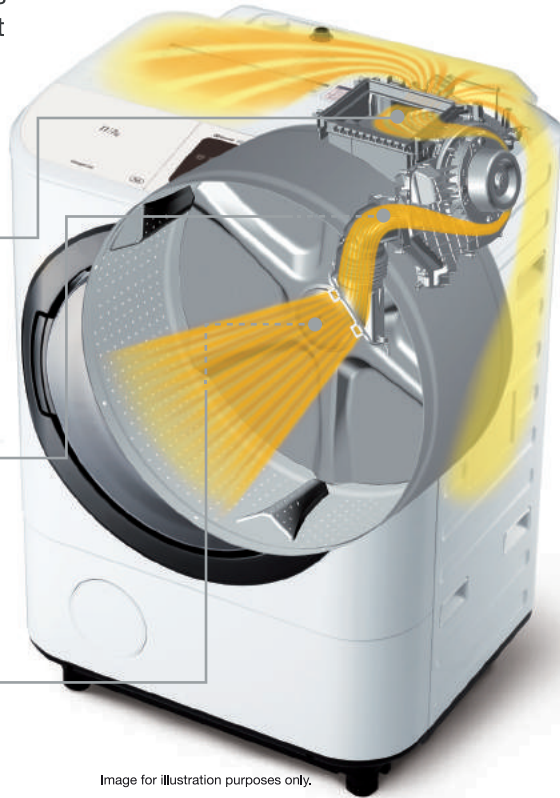
About Auto Self Clean

- Original factory settings are off. Once switched on, will operate automatically with each wash
- Auto Self Clean will not work for certain courses.
- Depending on the type of dirt and frequency, Auto Self Clean may not completely wash away all dirt. In addition, in the case of the washing machine being out of use for regular intervals, Auto Self Clean may not completely wash away all dirt.
- While Auto Self Clean is a function for cleaning the tub, for optimal results, it is recommended to be used along with the appropriate ‘Tub Clean’ program.

Energy and Water Saving

Heat Recycle Drying

Heat generated by the Jet Fan Motor is reused to power the high speed airflow while simultaneously used as hot air in the dryer. This process is known as Heat Recycle Drying. During the Heat Recycle Drying, heat generated from the main motor is transferred into the drum to raise temperature. Electricity usage is reduced.



Eco Vent (Warm Air)

Air warmed by the main motor and heater enters the Eco Vent (an open-close type inlet) situated along the drying air passage. The hot air is then used for drying.

Jet Fan Heat

In addition to heat from the heater, compressed heat from the Jet Fan that generates the high speed airflow and heat from the Jet Fan Motor are used as hot air during drying.

Main Motor Heat

Heat generated from the main motor is transmitted into the drum, raising the temperature.

Image for illustration purposes only.

Eco-Friendly Technology

Wind Iron

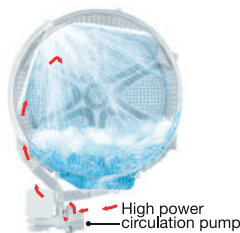
High speed wind and low heat drying reduce electricity consumption.

Big Drum

Clothes are dried dynamically and effectively in Big Drum with ample load capacity.

Water saving by high power circulation pump

The high power circulation pump allows washing to be done using little water. During the first rinse, the rotation spray sprinkles water over laundry and with the help of centrifugal force, detergent is effectively removed without using a lot of water. The second rinse is a Deep Rinse cycle.



High power circulation pump

User Friendly

Easy Washing Of Large Items



Blanket Program
6KG

Even large items can be washed at one go.

With a large drum and controls maintaining drum balance rotation during dehydration, a 6kg blanket program wash can be achieved.

Thin single blankets
(each under 1.5kg)
x 4



Thick single blankets
(each under 3kg)
x 2



Towel-blankets
(each under 1kg)
x 6



Lace curtains
(each under 0.4kg)
x 14



Wide Open Detergent Compartment



The lid opens wide and makes it easy to pour in detergent or softener. Both the lid and the case are detachable for easy cleaning.

Lint Filter



The new structure of the lint filter allows you to remove the dust caught just by shaking it.

Hitachi Technologies for Low Vibration

① 5-ply liquid load balancer

Reduces drum rotation vibration by offsetting imbalance *4-ply in model BD-SG100AJ.

② Dual action suspension

Changes degree of damping to match vibration amplitude.

Suspension holds firm during heavy vibrations.



Suspension lightens during softer vibrations.



Image for illustration purposes only.

③ 3D Acceleration Sensor

Detects forward/back, left/right and up/down vibrations.

④ Reverse Rubber Control

Ensures entire machine movement is controlled during vibrations.



Image for illustration purposes only.

Front Load with Slim Width



BD-SG100AJ

● Wind Iron

Smoothens out wrinkles after washing and spin-drying

● Auto Self Clean

Automatically cleans itself

● Heat Recycle Drying

Energy saving

Wind Iron

Hitachi's original Wind Iron technology smoothens out wrinkles after washing and drying, so that you can wear clothes directly out of the drum and save time on ironing. The big drum allows clothes to move freely when drying to prevent wrinkling, while the high-speed airflow of about 300km/h³ generated by the Jet Fan Motor stretches out the remaining wrinkles.

Furthermore, a light and gentle finishing is provided to the clothes, preventing change in form or shrinkage from heat, through low heat drying with temperature of clothes at about 60°C and below.⁴



Image for illustration purposes only.

1.0kg	3.5kg	6.0kg
<p>Wash and wear every day without hassle of ironing</p>	<p>Load a family of 4's entire day laundry easily. Wear straight after washing</p>	<p>Wash bigger loads such as bedsheets all at once. Wrinkling is reduced even without operating this function</p>
<p>Blouse Cotton 55% Polyester 45%</p>	<p>Blouse Cotton 55% Polyester 45%</p>	<p>Blouse Cotton 55% Polyester 45%</p>
<p>Casual shirt Cotton 100%</p>	<p>Casual shirt Cotton 100%</p>	<p>Casual shirt Cotton 100%</p>
<p>T-Shirt Cotton 100%</p>	<p>T-Shirt Cotton 100%</p>	<p>T-Shirt Cotton 100%</p>
<p>Trouser Cotton 75% Polyester 25%</p>	<p>Trouser Cotton 75% Polyester 25%</p>	<p>Trouser Cotton 75% Polyester 25%</p>
<p>Handkerchief Cotton 100%</p>	<p>Handkerchief Cotton 100%</p>	<p>Handkerchief Cotton 100%</p>

3. Calculated from area of air outlet and wind speed.

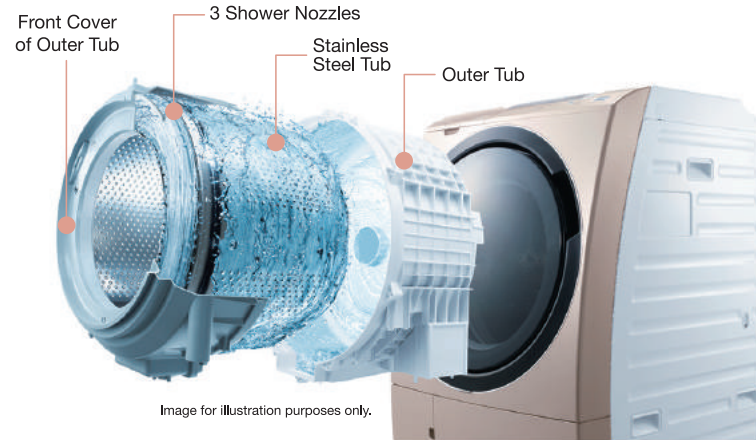
4. Standard course for Wash-Dry of a 6kg load. Measured with temperature sensor attached on test fabric set out by the Japan Electrical Manufacturers Association (Researched by Hitachi).

• The Wind Iron operation reduces wrinkles with varying results depending on the wash load, the material of the items, and the types of items that are dried together. Wrinkles cannot be eliminated completely.

Auto Self Clean

Auto Self Clean – The Tub Stain Fighter

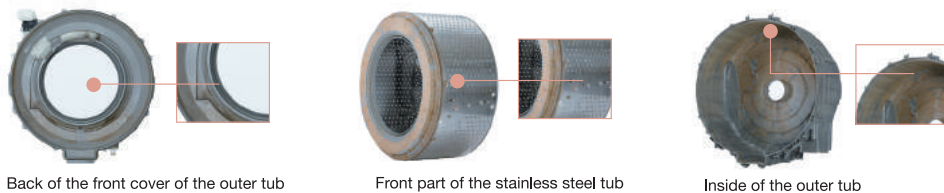
With daily usage, dirt such as sebum, detergent residue, bacteria, germs and black mould spores gradually accumulate in the tub. Left uncleaned, the dirt build-up will eventually stain the tub. This will consequently affect clothing quality and cleanliness.



With Hitachi's Auto Self Clean, 99% of germs¹ will be removed and mould growth prevented² with every wash. When doing laundry, switch the Auto Self Clean setting "ON"³ and it automatically washes away dirt from the outside of the stainless steel tub, as well as the inside of the outer tub.

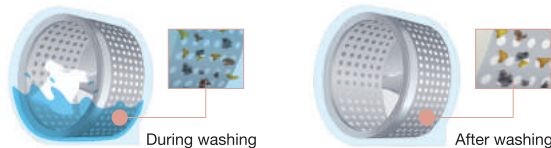
Remove germs¹ and prevent mould growth² with every wash

Dirt easily gets trapped in these areas.⁴



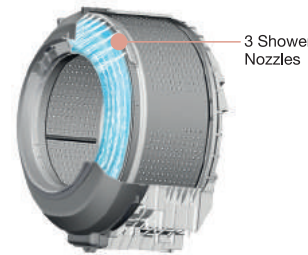
Tub will accumulate black mould over time, if not cleaned.

During washing, dirt gradually accumulates in the tub. After washing, dirt becomes attached to the tub, becoming harder to remove.



Mechanisms that remove dirt effectively

1. Shower



2. Strong water flow



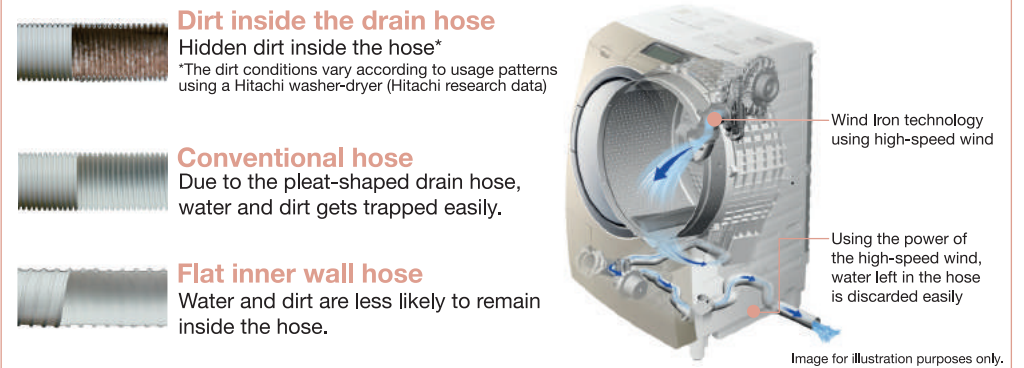
3. New spin hole layout

Spin Hole layout of the drum realigned to allow water to flow out and shower the outer tub effectively.

Dirt-resistant drain hose

3 Shower Nozzles release clean water through High Speed Spinning to wash the back of the front cover of the outer tub and the front portion of the stainless steel tub. Strong water flow collected from the bottom of the outer tub then washes outside of the stainless steel tub and inside of the outer tub. In addition, New Spin Hole layout on the drum allows water from drum's inside to flow into the outer tub.

The newly-designed drain hose comes with a smooth, unpleated inner surface and is further treated with antibacterial agent.⁵ Unlike conventional hoses, dirt will find it difficult to remain in the hose. Combined with high-speed wind generated by the Wind Iron, water is swiftly discarded separately through the new drain hose.



1. Tested by Kitasato Research Centre for Environmental Science. • Test method: Measurement of the reduction rate of germs smeared on plates that are attached to the outer tub and drum. • Means for germs removal: Use of the Auto Self Clean function. • Test objects: Outer tub and drum. • Test result: Germs reduction rate: 99%.
 • The test was conducted on the BD-S7500 (base model of the BD-S5500 for Japan) in Japan, using water, soiled laundry and detergent of Japan.
 2. Tested by Kitasato Research Center for Environmental Science. • Test method: Confirmation of the inhibitory effect of mould growth on medium plates that are attached to the outer tub and drum. • Means for preventing mould growth: Use of the Auto Self Clean function. • Test objects: Outer tub and drum. • Test result: Mould reduction rate: 99%.
 • The test was conducted on the BD-S7500 (base model of the BD-S5500 for Japan) in Japan, using water, soiled laundry and detergent of Japan.
 3. The setting is switched off at the time of shipment from the factory. Once switched on, Auto Self Clean operates every time you do your laundry.
 4. Tested by Hitachi using a Hitachi washing machine. • The dirt conditions vary according to usage patterns.
 5. Test institution: Boken Quality Evaluation Institute. • Test method: JIS Z 2801 (Film adhesion method). • Means for antibacterial finish: Blending an antibacterial agent into resin material. • Test object: Drain hose. • Test result: Antibacterial activity value: 2.0 or greater (considered to be antibacterial when this value is 2.0 or greater).
 • The test was conducted on the BD-S7500 (base model of the BD-S5500 for Japan) in Japan.

Top Load with Easy Access



BW-DV105AJ

● **Ultra-Stream Wash**
High wash capacity, yet slim

● **Ultra-Stream Rinse**
Thoroughly rinses out dirt & detergent residue

● **Auto Self Clean**
Automatically cleans itself

Ultra-Stream Wash

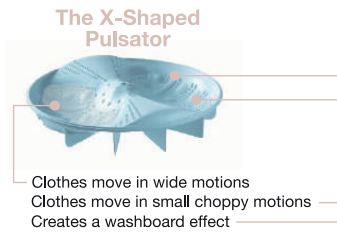
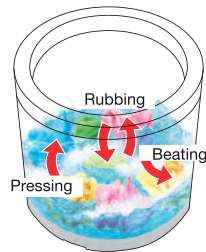


Image for illustration purposes only.

Ultra-Stream Wash

Highly concentrated detergent permeates deep into fabrics. The X-Shaped Pulsator moves clothes in and out, up and down while pressing, beating and rubbing them.

With the addition of the 'Ultra-Stream Wash' circulating high volumes of water, items are washed evenly giving an outstanding white finish.



Removes Even Stubborn Muddy Dirt



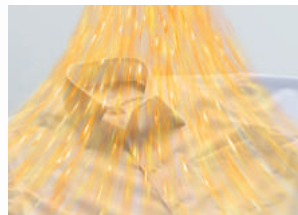
* Tested by Hitachi. Based on Wash/Cotton program with 3,5kg load, model BW-DV100A, equivalent to BW-DV105AJ. Results may differ depending on type of laundry, dirt, detergent and course.



Image for illustration purposes only.

Hot Mist

Hot air mist heats up and activates the enzyme elements in highly concentrated liquid detergent, helping to remove and prevent the yellowing that results from the oxidisation of grease.



Hot mist warms up clothes to 30-40°C

Removes Yellow Stains



Hot Mist 180min

Choosing the 'Hot Mist wash 180min' program at 30° - 40°C will help to remove the yellowing that results from the oxidisation of grease.

Hot Mist 90min

The 'Hot Mist wash 90min' program removes sebum and prevents yellow staining. Recommended for seasonal change in clothes and when you want an extra strong wash.

* The Hot Mist 180 min program uses twice the usual amount of synthetic detergent powder. Tested by Hitachi on the Hot Mist 180min program with 2 kg load, model BW-DV100A, equivalent to the BW-DV105AJ. Results will differ depending on type of laundry, dirt, detergent and course.

Ultra-Stream Rinse

Ultra-Stream Rinse

Large volume of water circulated by Ultra-Stream Shower along with a strong centrifugal force produced by high speed rotation technology thoroughly rinse out dirt and leftover detergent from laundry.



Images for illustration purposes only.

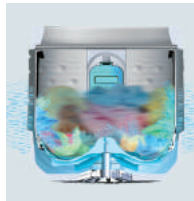
Dirt and detergent residue thoroughly rinsed

Step 1
Clean water passes



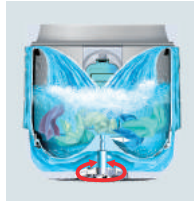
While the drum is being rotated, clean water lifts the detergent.

Step 2
Detergent squeezed by centrifugal force



The drum's high speed rotation (around 900 rotations/min) creates centrifugal force that squeezes the water and detergent together.

Step 3
High water circulation



The high volume circulation shower spreads around the tub, moving the laundry about while drawing the detergent off clothing fibres.

Comparison of Water Wrung Out of the Clothes Using Black Light

Water from both rinse methods looks clear at the first glance but using black light clearly shows the difference. Detergent is thoroughly rinsed out with no hidden residue left by the Ultra-Stream Rinse.

Before Rinse		Comparison of Laundry Water Wrung Out After Rinsing			
Cloudy		At first glance, both look clear but....		Detergent components show up as bluish-white	
		Conventional Rinse	Ultra-Stream Rinse	Conventional Rinse	Ultra-Stream Rinse
			Shining a black light		This much is rinsed out

*Tested by Hitachi. Rated load wash, using powdered synthetic detergent. Under black light, detergent particles show up bluish-white. Ultra-Stream Rinse model BW-DV100A is equivalent to BW-DV105AJ and conventional rinse model (BW-D10TV) equivalent to BW-D90TV. Results may differ depending on type of laundry, dirt, detergent, water and room temperature etc.

Various Programs + Drying

Hygienic Programs

Hygiene (Dry/1kg)

Removes cigarette smells from clothing. As bacteria removal is done by hot air, clothes come out clean without needing the use of chemicals. Since no drum rotation occurs, this course is recommended for items prone to mis-shaping.

* For loads less than 1kg.

Pollen (Dry/2kg)

Removes pollen attached to items that have been dried outdoors etc by washing it away, along with the drainage water from inside the machine.

*For loads of less than 2kg.

For Your Favourite Clothes

Delicate (Wash/3kg)

For items with these Care labels

A wash that gently rubs out stubborn creases while preventing damage to items.

*Please use liquid neutral detergent, liquid synthetic detergents (some detergents may not be suitable). For items under 3kg.

Dryclean (Wash/1.5kg)

For items with these Care labels

By circulating plenty of water, clothes are gently washed with hardly any drum rotation.

*Please use liquid neutral detergent.
*For items under 1.5kg.

Other Convenient Program

Speedy (Wash/5kg)

Recommended for lightly-soiled items where creasing is less of a concern.

5kg Wash
26min

Fluffy Finish – Convenient Drying Program

The X-Shaped Pulsator dries clothes by lifting them in the air. Items are spread out thus preventing uneven drying and creasing for a soft, quick finish.

Clothes are lifted and spread out.

Clothes are turned over and fully dried.

Water Cooling Dehumidification

This method of dehumidification releases hardly any moist air during drying. The moisture released from clothing is efficiently converted to water and drained away, preventing rooms from becoming humid.

**Data from The Japan Electrical Manufacturers' Association • Voluntary Standards 'Drying Characteristics Evaluation Methods'.

Auto Self Clean

Auto Self Clean – The Tub Stain Fighter

Every time you do the laundry, the washing machine cleans itself so that you can be sure that you are washing in a clean tub.

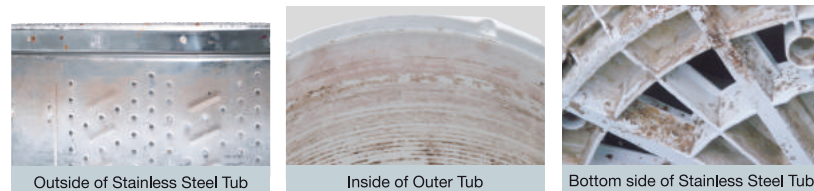
When doing the laundry, switch the Auto Self Clean setting “ON” and it automatically washes away dirt with clean tap water from the outside of the stainless steel tub as well as the inside of the outer tub.



Image for illustration purposes only.



With daily usage, dirt such as sebum, detergent, residue, bacteria, germs and black mould spores gradually accumulate in the tub. Left uncleaned, the dirt build-up will eventually stain the tub. The will consequently affect clothing quality and cleanliness.



Tub will accumulate black mould over time, if not cleaned.

Cleaning inside and outside of Stainless Steel Tub by shower.

Shower from the top of tub washes out the dirt by high speed tub rotation.

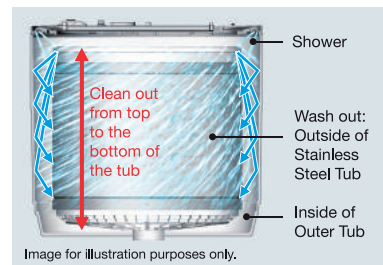


Image for illustration purposes only.

Cleaning Stainless Steel Tub, the bottom side of Outer Tub and wing parts.

Wings at the base of the tub strongly stir water to wash away dirt.



Image for illustration purposes only.

User Friendly

Glass Top Design



Easy Loading/Unloading

After Tangle-Free Finish, hot air is blown over items with Warm Spin Dry, resulting in less creases after drying.

Warm Spin Dry



Hot air is blown onto untangled items

Shirt (Cotton: 100%), hang-dried
Warm Spin Dry OFF More Creases | Warm Spin Dry ON Less Creases

Tangle-Free Finish

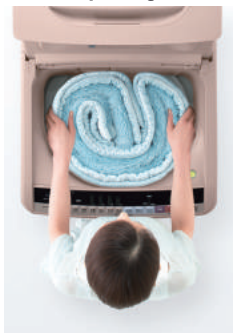


Right after Spin-dry

Items are untangled for easy take-out



Wide Opening 39cm



Specifications



Model Number	BD-NX110AHJ		BD-SG100AJ	
Body Colours	White		Champagne Gold	
Drum Capacity (L)	85 (Big Drum)		78 (Big Drum)	
Drum Diameter (cm)	61.2		53	
Capacity (Dry Clothes Weight, kg)	Washing	11.0	10.0	
	Drying	7.0	7.0	
Standard Water Consumption (L)	Washing	112 (Cotton)	54 (Cotton)	
	Washing & Drying	105 (Cotton)	60 (Cotton)	
Technology & Features	Washing	Big Drum	Big Drum	
		Ultra-Stream Wash	-	
		Hot Mist	-	
		Variable Temperature Control (30°C/40°C/50°C/60°C)	-	
		Circulation Water with Pump	-	
		3D Sensor System	3D Sensor System	
	Rinsing	Ultra-Stream Rinse	-	
	Drying	Wind Iron	Wind Iron	
		Heat Recycle	Heat Recycle	
		Steam Iron	-	
		2-Way Dehumidification (Heavy heat/Water cooling)	2-Way Dehumidification (Air Cooling/Water cooling)	
	Tub	Hot Tub Clean	-	
		Tub Clean	Tub Clean	
		Tub Dry	Tub Dry	
Stainless Steel		Stainless Steel		
Convenient Features	Auto Self Clean	Auto Self Clean		
	Flat Inner Wall Hose	Flat Inner Wall Hose		
	Low Vibration System	Low Vibration System		
	Warm Spin Dry (Tangle-Free Finish)	-		
Allergy UK Approval	Allergy Care/Hygiene/Anti-Bacterial Programs and Auto Self Clean		-	
Main Motor	56 Poles DD Inverter		56 Poles DD Inverter	
Rotation Speed (r/min)	700/1,000/1,300 (1,300 WASH AND DRY)		700/1,000/1,300 (1,700 WASH AND DRY)	
Rated Power (W)	Washing	1,750	450	
	Drying	1,170	1,050	
Rated Voltage (V) & Frequency (Hz)	AC220-240 & 50		AC220-240 & 50	
Dimensions (W x D x H, mm)	735 x 620 x 1,060		630 x 715 x 1,050	
Weight (Net/Gross, kg)	84/91		83/91	



Model Number	BW-DV105AJ	
Body Colour	Champagne	
Drum Diameter (cm)	49	
Capacity	Washing	10.5
(Dry Clothes Weight, kg)	Drying	5.5
Standard Water Consumption (L)	Washing	108 (Cotton)
	Washing & Drying	127 (Cotton)
Technology & Features	Washing	Ultra-Stream Wash
		Hot Mist
	Rinsing	Ultra-Stream Rinse
	Drying	Dehumidification (Water cooling)
	Tub	Tub Clean
Tub Dry		
Stainless Steel		
Convenient Features	Auto Self Clean	
	Warm Spin Dry (Tangle Free Finish)	
Main Motor	DD Inverter	
Rotation Speed (r/min)	850 (1,000 WASH AND DRY)	
Rated Power (W)	Washing	450
	Drying	1,050
Rated Voltage (V) & Frequency (Hz)	AC220-240 & 50	
Dimensions (W x D x H, mm)	610 x 635 x 1,060	
Weight (Net/Gross, kg)	53/57	



HITACHI
Inspire the Next